

1st SUPERSTRUCTURE DECK



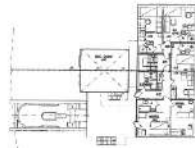
2nd SUPERSTRUCTURE DECK



3rd SUPERSTRUCTURE DECK



4th SUPERSTRUCTURE DECK



5th SUPERSTRUCTURE DECK



6th SUPERSTRUCTURE DECK



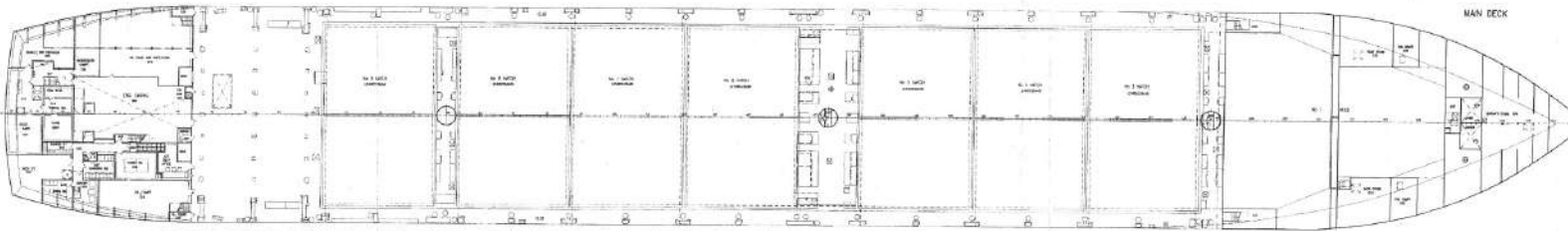
7th SUPERSTRUCTURE DECK



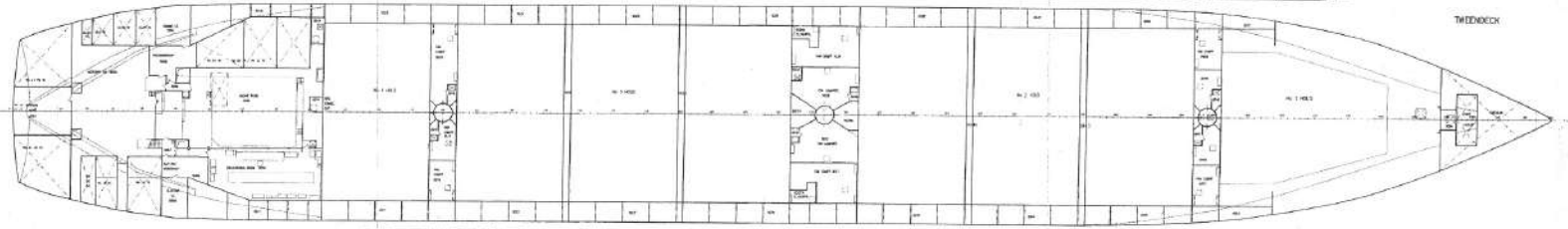
8th SUPERSTRUCTURE DECK



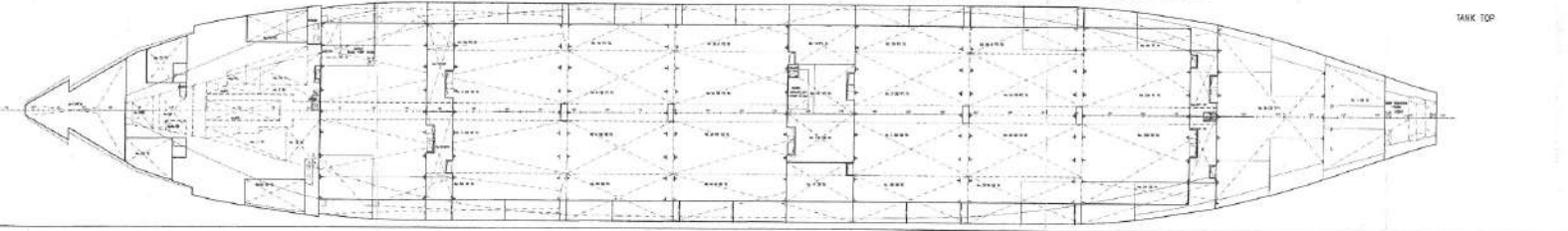
9th SUPERSTRUCTURE DECK



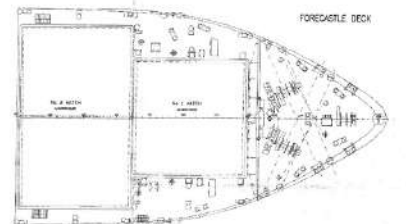
MAIN DECK



TWEENDECK



TANK TOP



FORECABLE DECK

MAIN PARTICULARS

LENGTH O.A.	184.10 m
LENGTH B.P.	171.94 m
BREADTH MOULDED	25.30 m
DEPTH TO MAIN DECK	13.50 m
FREEBOARD DRAUGHT	9.889 m
DEADWEIGHT ON FREEBOARD DRAUGHT	23029 t
MAIN ENGINE & R/A	62U UCELEAP-1432Z 13320 kW/113rpm
SERVICE SPEED (DISCHARGE/DRY DOCK)	19.74 kn
CRUISING RANGE	15000 Nm
CREW	21+2+PILOT
CONTAINER CAPACITY (PREVIOUS/AS, by volume)	6 ISO - 63x 110 OR 1800 - 1000 TEU 1704 1735 TEU

VALID FOR B170/12 C/V LEOPARD CALL SIGN D5D5V3

REG. NO.	170329	CLASS	A	STRENGTH VERIFICATION PLAN	
REG. DATE	11.03.19	CLASSIFICATION	B170	STRUCTURAL ANALYSIS	
CLASS	B170	MANUFACTURER			
DESIGN	1703028				
CONTAINER MODEL 100 000				ENERGETIC REG.	
GENERAL ARRANGEMENT				STATUS	
SCALE 1:1000				DATE	
DRAWN BY				CHECKED BY	
B170-D2/0110-1x13				DATE	17

All dimensions must be in accordance with applicable IACS/IMO standards.