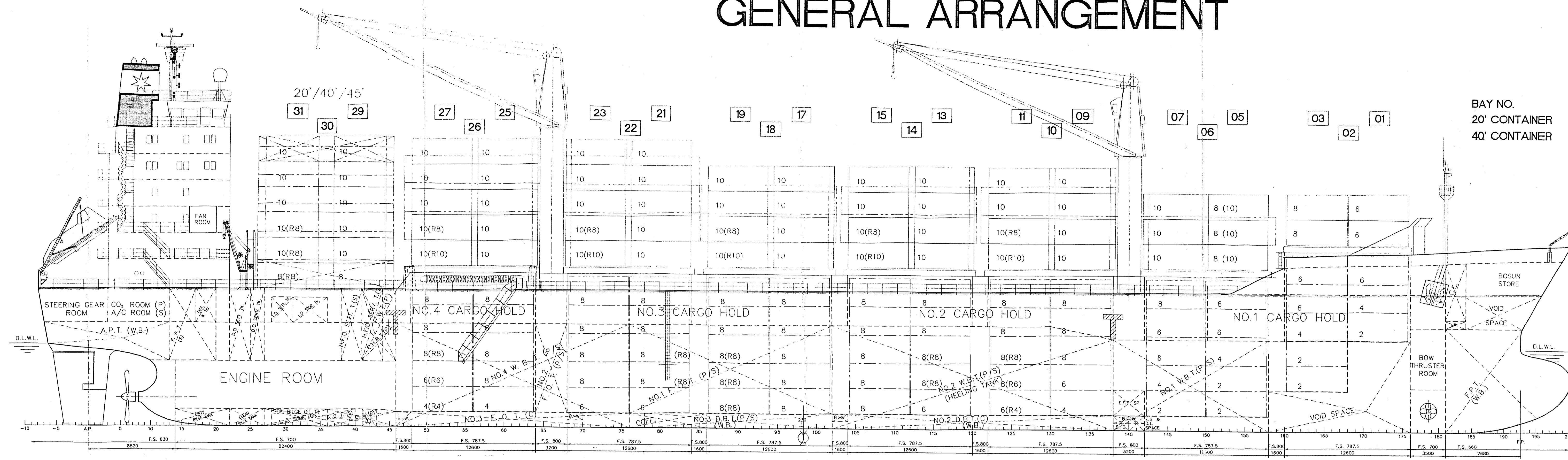
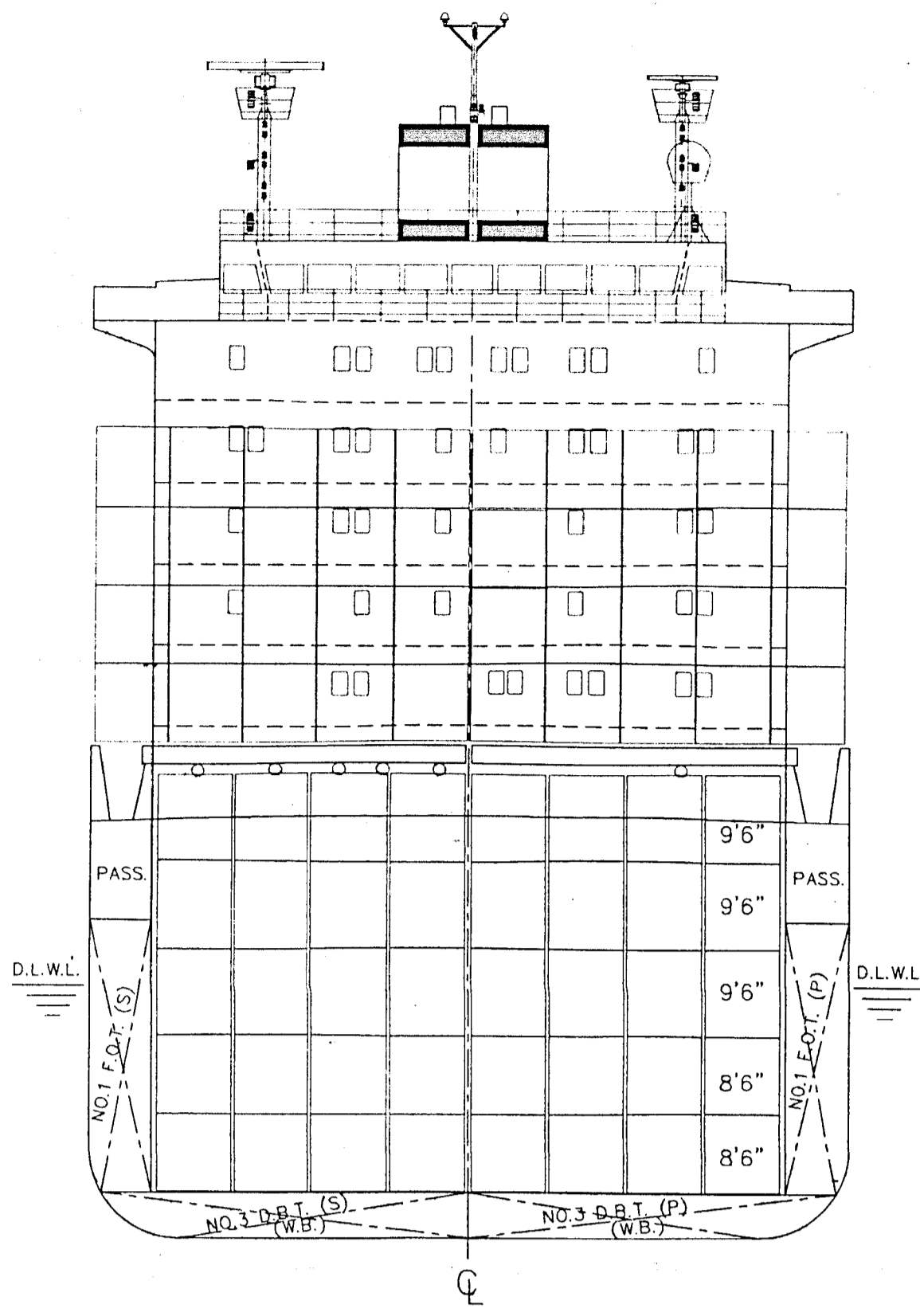


GENERAL ARRANGEMENT

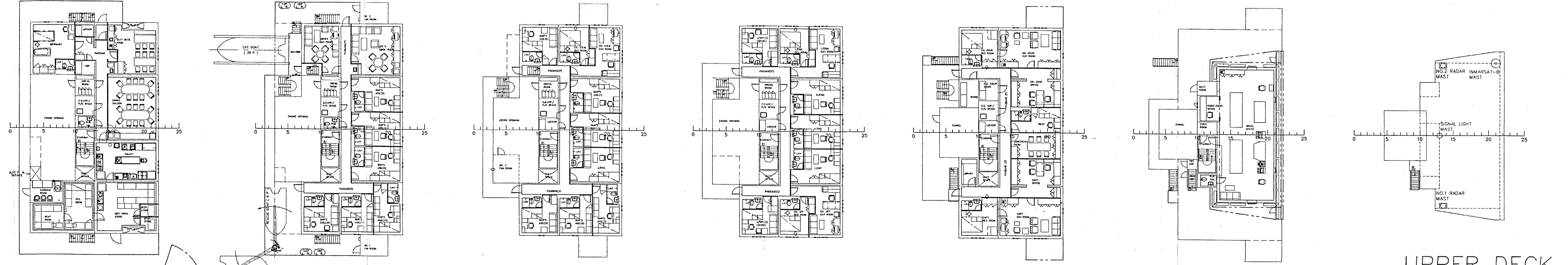


BAY NO.
20' CONTAINER
40' CONTAINER

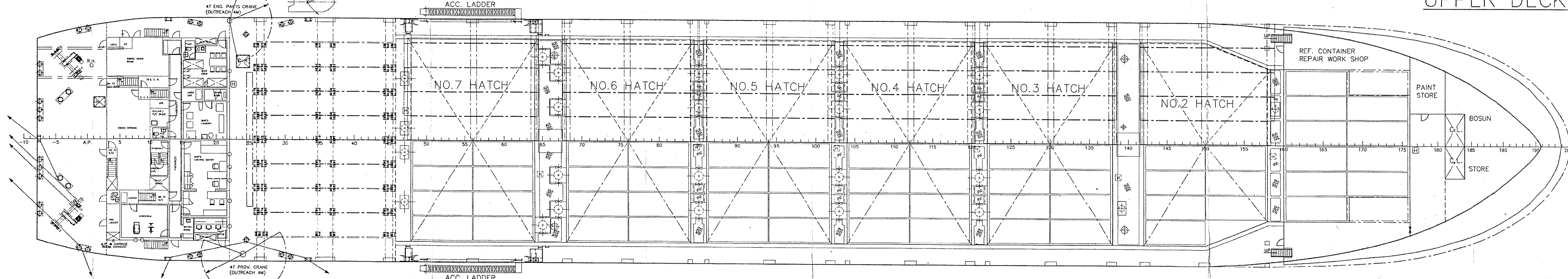


MIDSHIP SECTION
(LOOKING AFTWARD)

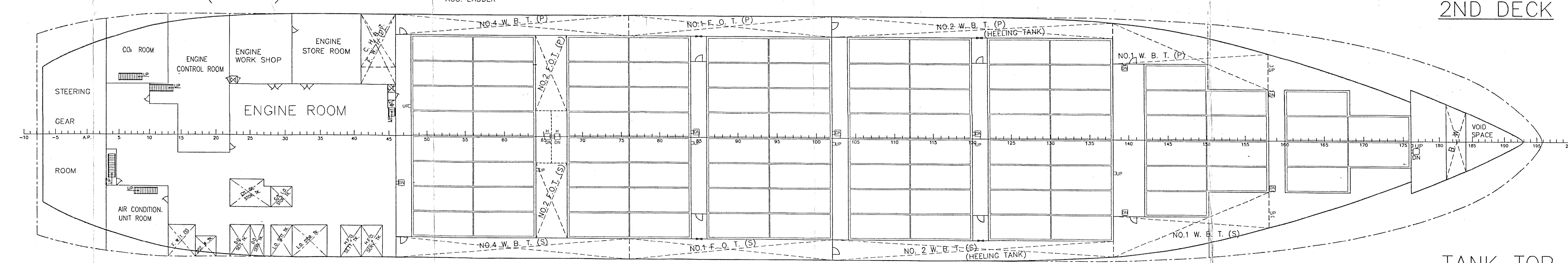
A DECK B DECK C DECK D DECK E DECK NAV. BRI. DECK COMPASS DECK



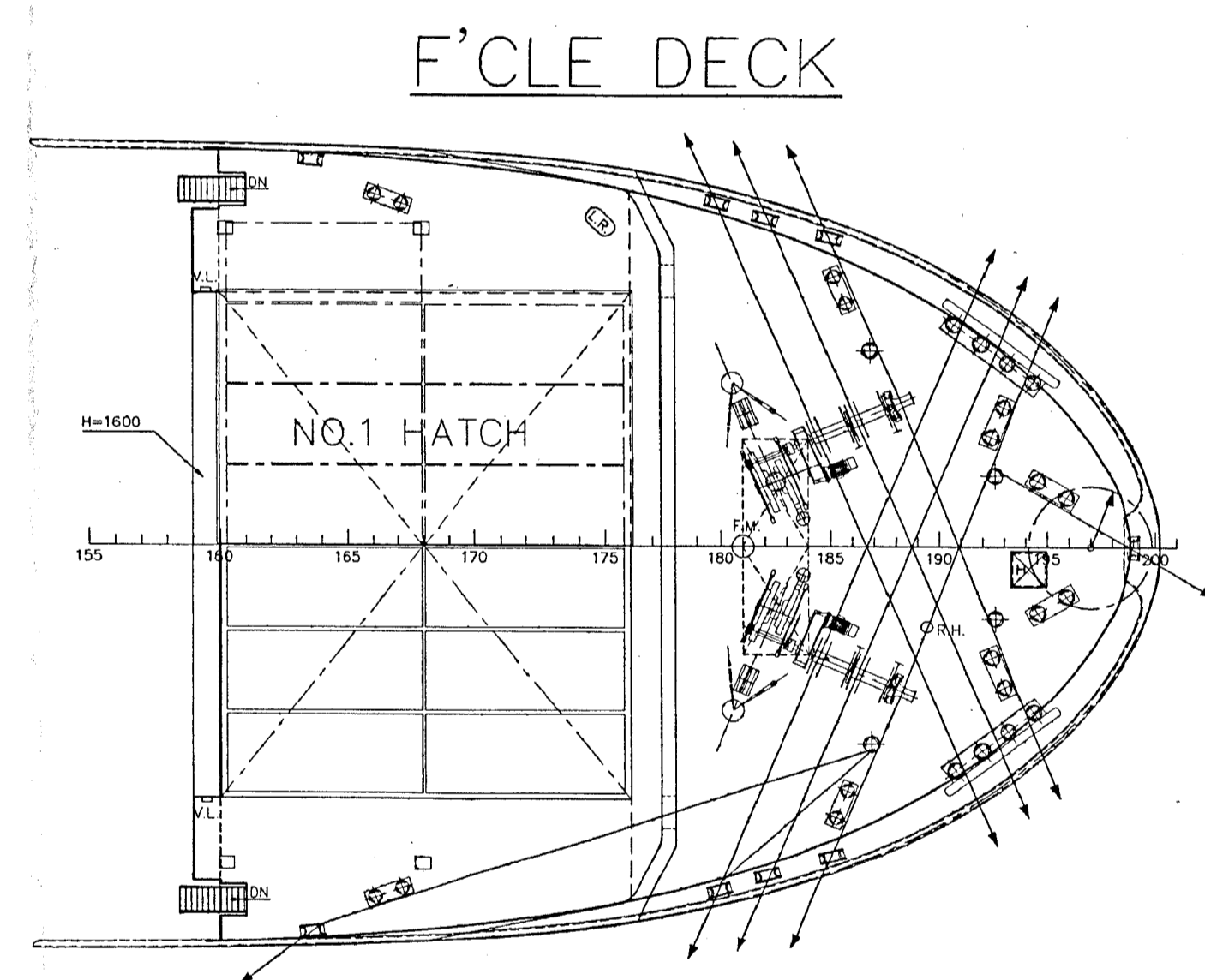
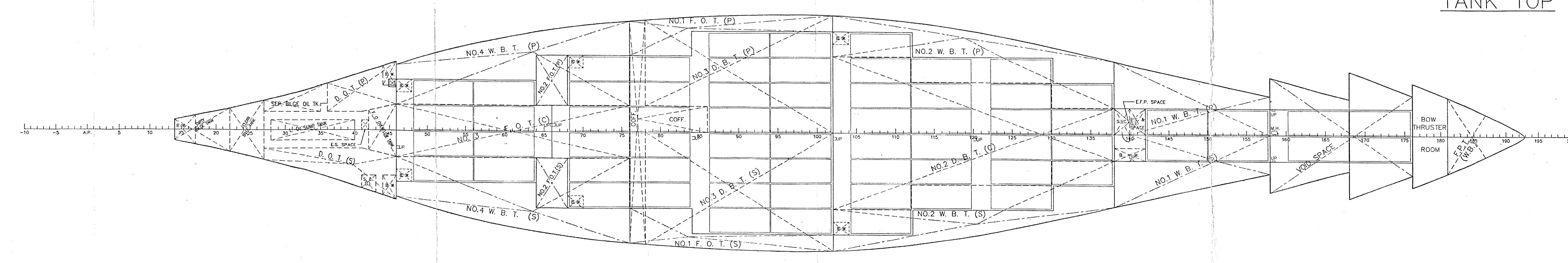
UPPER DECK



2ND DECK



TANK TOP



F'CLE DECK

PRINCIPAL PARTICULARS

LENGTH O.A.	approx. 155.00 M
LENGTH B.P.	145.00 M
BREADTH (MLD.)	25.00 M
DEPTH (MLD.)	13.90 M
DESIGNED DRAUGHT (MLD.)	8.40 M
SCANTLING DRAUGHT (MLD.)	9.50 M
DEADWEIGHT (AT DESIGNED DRAUGHT, MLD.)	min. 13,975 M.T.
DEADWEIGHT (AT SCANTLING DRAUGHT, MLD.)	approx. 17,175 M.T.
GROSS TONNAGE	approx. 14,000
MAIN ENGINE	LICENSE MAN-B&W 7550MC X 1 SET
MAX. CONTINUOUS RATING (MCR)	13,580 PS X 127 RPM
NORMAL OUTPUT RATING (85%MCR)	11,543 PS X obt.120.3 RPM
SERVICE SPEED (85%MCR, 15% S.M.)	min. 18 KNOTS
CLASS & NOTATION	ABS, +A1, +C, CONTAINER CARRIER, +AMS, +ACCU, SH, OMB0
NO. OF CONTAINER	
ON DECK	638 TEU
IN HOLD	454 TEU
TOTAL	1,092 TEU

COMPLEMENT TABLE OF THIS VESSEL

RANK	DECK	ENGINE	OTHERS	SUM
CAPTAIN	1-CAPTAIN	1-C/ENGINEER	-	2
SENIOR OFFICER	1-C/OFFICER	1-1/ENGINEER	1-C/STEW	3
JUNIOR OFFICER	1-1/OFFICER	1-2/ENGINEER	2-J/OFF. (SPARE)	7
SENIOR ENGINEER	1-2/OFFICER	1-J/ENGINEER	1-PILOT	4
SUBTOTAL	4	4	4	12
SHIP ASSISTANT				12
TOTAL ON BOARD 24 PERSONS				

BIBLIOGRAPHY

NO.	DESCRIPTION	BY	CHK.	APP.	DATE
1	THE ITEM 1,4,8,9,12,14,15 TO BE REVISIONED BY OWNER REQUIREMENTS AND OTHERS ARE FOLLOWED BY DESIGN PROGRESS.	C.H.	C.H.	C.H.	JAN 27/97
2	1. TO SUIT NEW CABIN FROM UPPER DECK TO NAV. BRI. DECK.				
3	2. TO SHIFT THE ACC. LADDER (P&S) FOR CONVENIENCE OF OPERATION.				
4	3. TO MODIFY NO.1 & NO.2 FAN ROOM ON B-DECK AND E/R VENT. TRUNK ON UPPER & A-DECK.				
5	4. TO REVISE THE SHARE OF THE SIGNAL LIGHT MAST ON MIDSHIP SECTION AND PROFILE.				
6	5. TO INTERCHANGE THE LOCATION OF D.O. SERV. TANK AND D.O. SETT. TANK IN PROFILE & 2ND TANK PLAN.				
7	6. TO MODIFY THE NON-WATERTIGHT BULKHEAD OF FR 54 & FR 56. AS SHOWN ON TANK TOP PLAN FOR EASY TO OPERATE THE REEFER SCKET.				
8	7. TO ENLARGE THE COAMING TOP OF NO.1 HATCH AFT AND EXTEND THE F'CLE DECK AS SHOWN ON F'CLE DECK PLAN.				
9	8. TO INDICATE 45'(HIGH CURB) CONTAINER ON UPPER DECK P.S. AND PROFILE PLAN.				
10	9. TO REDRAW THE HEIGHT OF 45' CONTAINER STOWED ON UPPER DECK AFT.				
11	10. TO MODIFY THE GRATINGS BETWEEN HATCHES ON HATCH COAMING TOP.				
12	11. THE MECH. VENTILATION SYSTEM IN CARGO HOLD TO BE SHOWN ON UPPER DECK PLAN.				
13	12. THE PILOT LADDER REEL (P&S) TO BE CANCELLED.				
14	13. TO INTERCHANGE THE E.F.P. SPACE, E.S. & D.L. SPACE, S.C. (FROM S.S. TO P.S.) AND B.W. (FROM P.S. TO S.S.)				
15	14. TO SUIT NEW LASHING PATTERN, THE CONTAINER LOCATION OF ODD BAY NO.1 ~ 31 TO BE REVISED.				
16	15. TO CANCEL THE VERTICAL LADDER IN STAIRCASE ON NAV. BRI. DECK AND ACCESS HATCH ON COMPASS DECK.				
17	OWNER REQUIREMENTS				
18	1. TO MODIFY THE LOCATION & QUANTITY OF REEFER CONTAINER.				
19	2. TO MODIFY THE LOCATION & QUANTITY OF VENTILATOR FOR CARGO HOLD.				
20	3. TO MODIFY THE TRAFFIC SYSTEM IN CARGO HOLD.				
21	4. TO INDICATE TWO(2) SETS OF DECK CRANE & CRANE PEDESTAL ON UPPER DECK & PROFILE PLAN.				

674 . 675	AKTIESELSKABET DAMPSKIBSELSKABET SVENDBORG	ABS
672 . 673	AND DAMPSKIBSELSKABET AF 1912 AKTIESELSKAB	
HULL NO.	OWNER	CLASS
BUILDER	CHINA SHIPBUILDING CORPORATION	
SHIP	1,092 TEU CONTAINER SHIP	
APPROVED BY	C.H. [Signature]	SCALE 1/200
DESIGNED BY	[Signature]	
CHECKED BY	[Signature]	
DATE	SEP. 20/96	
GENERAL ARRANGEMENT (WITH CRANE)		CSBC DWG. NO. K2000401B
CHINA SHIPBUILDING CORPORATION UNITED SHIP DESIGN & DEVELOPMENT CENTER		USDC DWG. NO. 7106-G200B